



£110,000 Guide Price

Sitwell Terrace, Wickersley, Rotherham

Cottage | 1 Bedroom | 1 Bathroom

01709 912730



www.uflit.co.uk



Step Inside

Key Features

- In Need of a little TLC whilst offering Huge Potential
- One Double Bedroom Stone Built Property
- Enclosed Garden/ Terrace
- Family Bathroom
- Period Features
- Separate Outbuilding
- Highly Sought After Location
- NO ONWARD CHAINMUST BE VIEWED!

Property Description

GUIDE PRICE £110,000 to £120,000

MARY MARY QUITE CONTRARY...AN ENCHANTED COTTAGE IN A HIGHLY DESIRABLE AREA...!

Uflit are delighted to welcome to the market this CHARMING one double bedroom cottage filled with character.

Main Particulars

GUIDE PRICE £110,000 to £120,000

MARY MARY QUITE CONTRARY...AN ENCHANTED COTTAGE IN A HIGHLY DESIRABLE AREA...!

Uflit are delighted to welcome to the market this CHARMING one double bedroom cottage filled with character, stone built and retaining many of its period features whilst blending with the modern aspect of living. The cottage boasts a quaint entrance lounge and a country style kitchen, to the first floor a large master bedroom with an array of fitted furniture and a bathroom. To the outside a courtyard to the front tastefully appointed and a separate stone outbuilding for storage. Located in a quiet and highly desirable area of Wickersley, close to local amenities to include the vibrant shopping parade, transport links and schools.

If you're wanting a cottage with an abundance of character and charm then we have found your dream home...! Don't Delay CALL UFLIT TODAY 01709 912730.

Council Tax Band: A

Tenure: Freehold

Lounge w: 3.6m x l: 4.8m (w: 11' 10" x l: 15' 9")

Once entering through a glazed upvc door you really do appreciate the period features. A feature chimney breast adds to the character of the building whilst carpeted stairs lead to the first-floor accommodation, an opening to the kitchen and a front facing upvc bay window.

Kitchen w: 1.7m x l: 2m (w: 5' 7" x l: 6' 7")

A quirky country style kitchen featuring wall and base units with complimentary work surface areas and plumbing for further utilities and two rear facing upvc windows.

FIRST FLOOR:

A carpeted landing with doors giving access to the bedroom and bathroom.

Bedroom 1 w: 3.7m x l: 4m (w: 12' 2" x l: 13' 1")

A large double bedroom with a range of fitted wardrobes and furniture and a front facing upvc window.

Shower Room

w: 1.8m x l: 2m (w: 5' 11" x l: 6' 7")

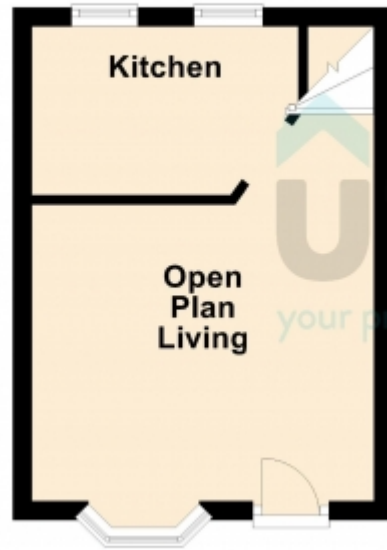
Comprising of a paneled bath, low level wc and wash hand basin, partially tiled walls, carpeted flooring and a rear facing upvc window.

Outside

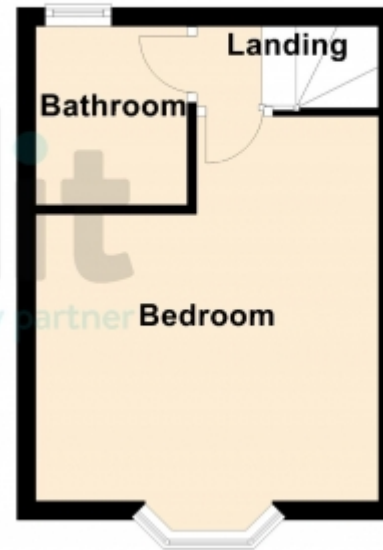
This property has curb appeal with a stone wall protecting a cosy courtyard with gated access to a predominately paved patio and garden shed.



Ground Floor



First Floor



This floorplan is for illustrative purposes only and the location of doors, windows and other items are approximate.

Agents notes: All measurements are approximate and for general guidance only and whilst every attempt has been made to ensure accuracy, they must not be relied on. The fixtures, fittings and appliances referred to have not been tested and therefore no guarantee can be given that they are in working order. Internal photographs are reproduced for general information and it must not be inferred that any item shown is included with the property. Copyright © 2024 11919255 Registered Office: 20 Brinsworth Lane, Brinsworth, Rotherham, S60 5PS

Telephone: 01709 912730



www.uflit.co.uk